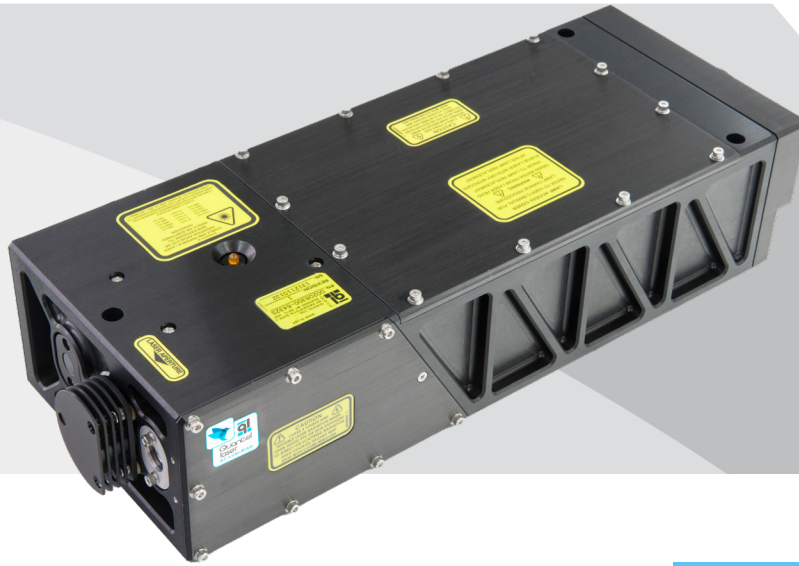


DRL

Compact Dual-Rod pulsed Nd:YAG laser



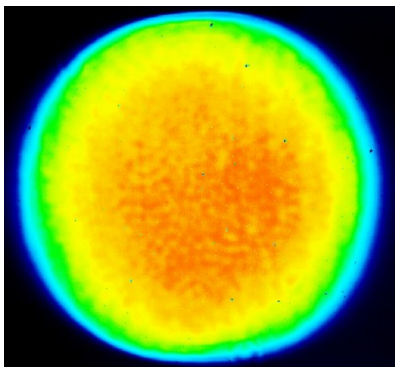
MAIN FEATURES

- Compact laser head for easy integration
- Sealed head for operation in various environments
- Pulse energy up to 800 mJ @ 1064 nm
- 1064, 532 or 355 nm available
- Repetition rate up to 30 Hz

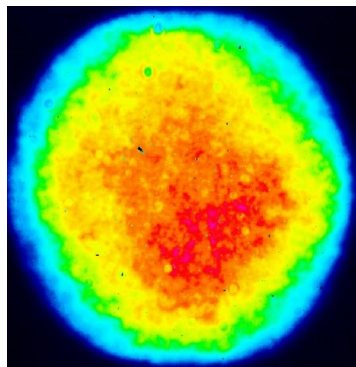
MAIN APPLICATIONS

- **MEDICAL**
- **LIF**
- **LiDAR**
- **ABLATION**
- **Ti:Sa PUMPING**

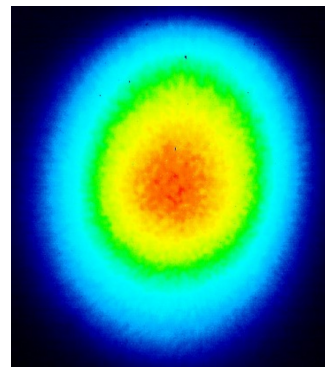
Typical beam profiles



Near field @ 1064 nm, stable resonator
650 mJ, 30 Hz



Near field @ 355 nm, stable resonator
150 mJ, 30 Hz



Far field @ 532 nm, stable resonator
370 mJ, 10 Hz

www.quantel-laser.com

Many options and configurations are available. Please contact Lumibird to find the best match for your needs and compatibility between options.

DRL

Compact Dual-Rod pulsed Nd:YAG laser

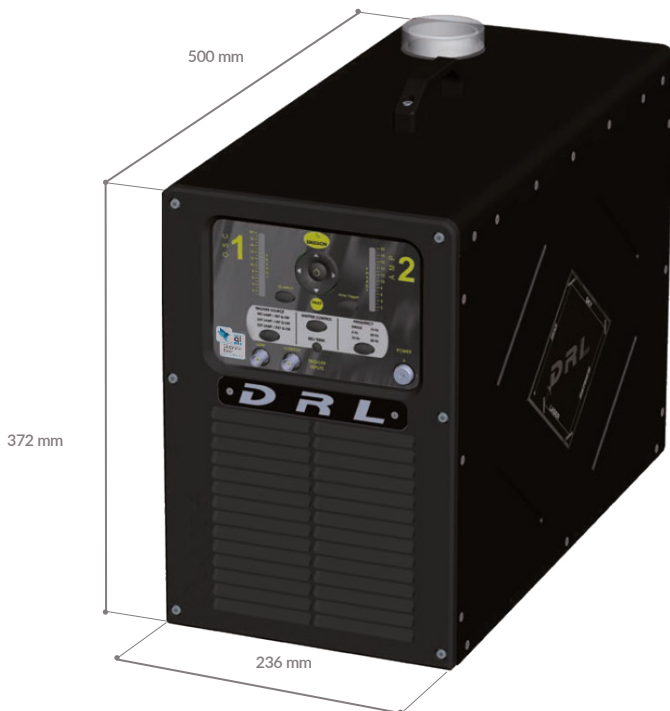


SPECIFICATIONS

Resonator type	DRL							
	Stable			GRM				
Repetition rate (Hz)		10	20	30	10	20	30	
Energy per pulse (mJ)	1064 nm	800	700	650	650	550	450	
	532 nm	370	340	300	350	300	200	
	355 nm	190	170	150	170	160	140	
Pulse duration (ns) ⁽¹⁾	1064 nm	< 15						
Beam diameter (mm) ⁽²⁾	1064 nm	< 11						
Beam divergence (mrad) ⁽³⁾	1064 nm	< 5			< 1.5			
Pulse to pulse energy stability (%) ⁽⁴⁾	1064 nm	< 1.5						
	532 nm	< 2						
	355 nm	< 3						

- (1) Measured at FWHM with fast photodiode and 300 MHz oscilloscope
 (2) At the output of the laser
 (3) Full angle, at 1/e² of the peak
 (4) RMS, 99 % of shots

Integrated cooling & electronics



Power drift (%) ⁽¹⁾	1064 nm	± 5
Pointing stability (µrad) ⁽²⁾	All wavelengths	< 100
Jitter (ns) ⁽³⁾	All wavelengths	< ± 2
Linewidth (cm ⁻¹) ⁽⁴⁾	1064 nm	1

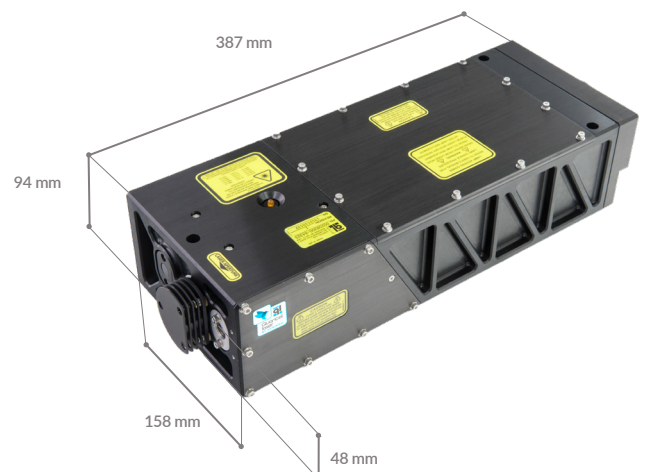
- (1) Over 8 hours, 18 °C < T < 28 °C, for ΔT < ± 5 °C
 (2) Full angle, 99 % of shots
 (3) With respect to Q-Switch trigger
 (4) Measured at FWHM

OTHER INFORMATION

Power requirements	200-240 VAC, 50/60 Hz, 5A, single phase	
Cooling	Water to air	
Temperatures	Operating	+ 10 °C to + 30 °C
	Storage	+ 5 °C to + 50 °C
Laser head sealing	IP 66	
Vibration and shocks	Complies with MIL-STD-810	
Max. altitude (m)	2000	
Cable length (m)	3 ⁽¹⁾	
Flashlamps warranty	100 million shots ⁽²⁾	
Weight (kg)	Laser head	6.4
	Integrated cooling & electronics	18.1

- (1) Other lengths up to 15 m on request
 (2) 80 % of energy, or 1 year, whichever comes first

Laser head



www.quantel-laser.com

Many options and configurations are available. Please contact Lumibird to find the best match for your needs and compatibility between options.



Lumibird has locations across the globe that are available to provide support for any product, service or inquiry. Visit www.lumibird.com to connect with any of our global sites.

