

# BD

Water-cooled beam dumps for high power lasers

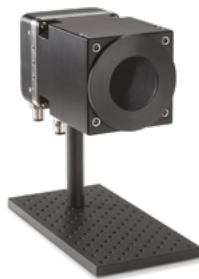


## KEY FEATURES

- > **EASY TO USE**  
Just plug the water-cooling and you're done!
- > **2 MODELS TO CHOOSE FROM**
  - 4 kW : BD-4KW-HE
  - 12 kW : BD-12KW-HD
- > **VERY LARGE APERTURE**  
The round aperture of 100 mm in diameter accommodates even the largest beams
- > **HIGH DAMAGE THRESHOLDS**  
Up to 16 kW/cm<sup>2</sup> (at 500 W)
- > **ISOLATION TUBE IN OPTION**  
It is possible to add an isolation tube to reduce back reflections

## REDUCE BACK-REFLECTIONS

All BD models can be fitted with a water-cooled absorbing TUBE to reduce the back-reflections below 4%. The TUBE extension is backward-compatible so it can be added to your current BD unit.



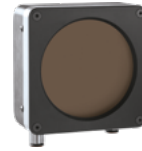
## ACCESSORIES





Stand with steel post



Pelican carrying case



	BD-4KW-HE	BD-12KW-HD
<b>MAX AVERAGE POWER (CONTINUOUS / 2 MINUTES)</b>	4000 W / 4500 W	12 000 W / 12 000 W
<b>EFFECTIVE APERTURE</b>	100 mm $\phi$	100 mm $\phi$
<b>COOLING METHOD</b>	Water-cooled	Water-cooled
<b>DAMAGE THRESHOLDS</b>		
Maximum average power density <sup>a</sup>		
500 W	10 kW/cm <sup>2</sup>	16 kW/cm <sup>2</sup>
4 kW	4 kW/cm <sup>2</sup>	---
5 kW	---	6.5 kW/cm <sup>2</sup>
10 kW	---	3.5 kW/cm <sup>2</sup>
<b>PHYSICAL CHARACTERISTICS</b>		
Effective aperture	100 mm $\phi$	100 mm $\phi$
Absorber (high damage threshold)	HE	HD
Cooling water		
Required cooling flow	(4 - 6) LPM	(6 - 10) LPM
Temperature range	(15 - 25) °C	(15 - 25) °C
Dimensions	127H x 127W x 74D mm	127H x 127W x 70D mm
Weight (head only)	1.8 kg	3.3 kg
<b>ORDERING INFORMATION</b>		
Compatible stand	STAND-S-443-C	STAND-S-443-C
Product page		

a. At 1064 nm, 1.07-1.08  $\mu$ m and 10.6  $\mu$ m.