

## Polarization Independent SM Fiber Circulators

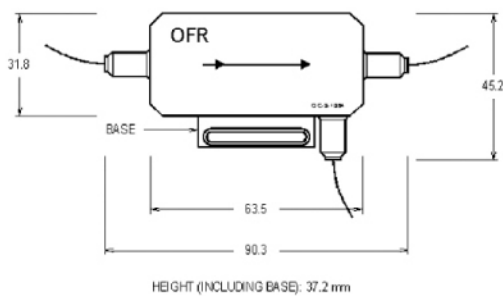
## Double stage (Tandem) Isolator

Catalog Number	Operating Wavelength	Isolation (2-1)	Isolation (3-2)	Insertion Loss (1-2)	Insertion Loss (2-3)	Crosstalk (1-3, 3-1)	Return Loss	PDL	PMD	Power Handling (1-2)	Power Handling (2-3)
OCT-3-1310	1310nm ± 20nm	>58dB	>50dB	0.8-1.5dB	0.8-1.5dB	>50dB	<55dB	<0.1dB	<0.1ps	5W	500mW
OCT-3-1550	1550nm ± 20nm	>58dB	>50dB	0.8-1.5dB	0.8-1.5dB	>50dB	<55dB	<0.1dB	<0.1ps	5W	500mW

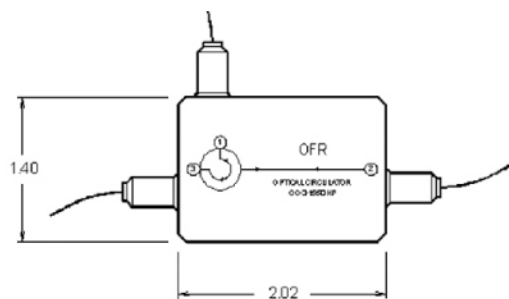
## Polarization Dependent PM Fiber Circulators

## High Power

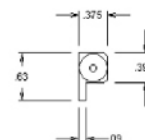
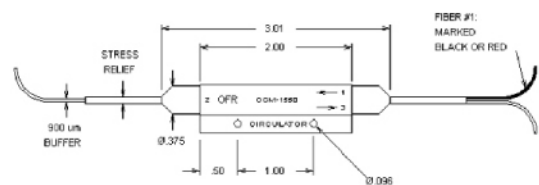
Catalog Number	Operating Wavelength	Isolation (2-1)	Isolation (3-2)	Insertion Loss (1-2)	Insertion Loss (2-3)	Crosstalk (1-3, 3-1)	Return Loss	Power Handling (1-2)	Power Handling (2-3)
OC-3-633-PM	633nm ± 10nm	33-40dB	30-35dB	1.4-1.8dB	1.5-2.0dB	<40dB	>48dB	1W	300mW
OC-3-660-PM	660nm ± 10nm	33-40dB	30-35dB	1.4-1.8dB	1.5-2.0dB	<40dB	>48dB	1W	300mW
OC-3-690-PM	690nm ± 10nm	33-40dB	30-35dB	1.4-1.8dB	1.5-2.0dB	<40dB	>48dB	1W	300mW
OC-3-780-PM	780nm ± 10nm	27-35dB	27-35dB	0.8-1.8dB (1.2 typical)	1.3-2.0dB (1.8 typical)	<40dB	>48dB	1W	1W
OC-3-800-PM	800nm ± 10nm	27-35dB	27-35dB	0.8-1.8dB (1.2 typical)	1.3-2.0dB (1.8 typical)	<40dB	>48dB	1W	1W
OC-3-830-PM	830nm ± 10nm	27-35dB	27-35dB	0.8-1.8dB (1.2 typical)	1.3-2.0dB (1.8 typical)	<40dB	>48dB	1W	1W
OC-3-850-PM	850nm ± 10nm	27-35dB	27-35dB	0.8-1.8dB (1.2 typical)	1.3-2.0dB (1.8 typical)	<40dB	>48dB	1W	1W
OC-3-1047-PM	1047nm ± 10nm	>33dB	>30dB	1.3-1.9dB	1.3-1.9dB	<40dB	>50dB	3W	3W
OC-3-1053-PM	1053nm ± 10nm	>33dB	>30dB	1.3-1.9dB	1.3-1.9dB	<40dB	>50dB	3W	3W
OC-3-1064-PM	1064nm ± 10nm	>33dB	>30dB	1.3-1.9dB	1.3-1.9dB	<40dB	>50dB	3W	3W
OC-3-1080-PM	1080nm ± 10nm	>33dB	>30dB	1.3-1.9dB	1.3-1.9dB	<40dB	>50dB	3W	3W
OC-3-1310-PM	1310nm ± 20nm	>35dB	>32dB	0.9-1.3dB	0.9-1.3dB	>50dB	<55dB	5W	-
OC-3-1550-PM	1550nm ± 20nm	>35dB	>32dB	0.9-1.3dB	0.9-1.3dB	>50dB	<55dB	5W	-



OC-3-1064



OC-3-1550-HP



OCM-1550