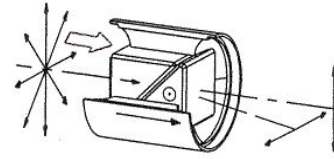


### Rochon Prism Polarizers

#### Specifications

Material	: Crystal Quartz / MgF <sub>2</sub>
Surface Flatness	: $\lambda/10$
Surface quality	: 85 ~ 91% (N-type)
Transmission	: ~ 71%
	: 80 ~ 85% (MRQ and MFRV-Series)



Crystal Quartz Rochon

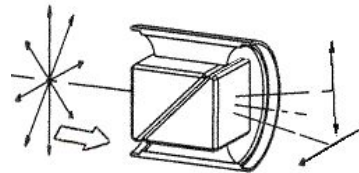
Catalog no.	Clear Aperture diameter	Angular Separation (degrees)	Material
MFRV5-46	5 mm	4.6	MgF <sub>2</sub>
MFRV5-51	5 mm	5.1	MgF <sub>2</sub>
MFRV5-54	5 mm	5.4	MgF <sub>2</sub>
MFRV9-46	9 mm	4.6	MgF <sub>2</sub>
MFRV9-51	9 mm	5.1	MgF <sub>2</sub>
MFRV9-54	9 mm	5.4	MgF <sub>2</sub>
PVR-10-2-N	10 mm	2	MgF <sub>2</sub>
PVR-10-2-T	10 mm	2	MgF <sub>2</sub>
PVR-10-2-N	10 mm	2.5	Crystal quartz
PVR-10-2-T	10 mm	2.5	Crystal quartz
PVR-10-2-W	10 mm	2.5	Crystal quartz
MRQ12-025	12 mm	0.25	Crystal quartz

Catalog no.	Clear Aperture diameter	Angular Separation (degrees)	Material
MRQ12-05	12 mm	0.5	Crystal quartz
MRQ12-1	12 mm	1	Crystal quartz
MRQ19-025	19 mm	0.25	Crystal quartz
MRQ19-05	19 mm	0.5	Crystal quartz
MRQ19-01	19 mm	1	Crystal quartz
MRQ25-025	25 mm	0.25	Crystal quartz
MRQ25-05	25 mm	0.5	Crystal quartz
MRQ25-1	25 mm	1	Crystal quartz
MRQ32-025	32 mm	0.25	Crystal quartz
MRQ32-05	32 mm	0.5	Crystal quartz
MRQ32-1	32 mm	1	Crystal quartz

### Wollaston Prism Polarizers

#### Specifications

Material	: Crystal Quartz / MgF <sub>2</sub>
Surface Flatness	: $\lambda/4$ at 633nm over the clear aperture
Surface quality	: 40 ~ 20
Transmission	: Cemented : >85% (@350-2455nm)
	: Optically contacted : >80% (@200-350nm)
	: >85% (@350-2500nm)



Crystal Quartz Wollaston

Catalog no.	Clear Aperture diameter	Angular Separation (degrees)	Mount Dimensions (inches)	
			O.D. (±.0015)	Length (±.007)
MWQ12-05	12	0.5	0.998	0.750
MWQ12-1	12	1	0.998	0.750
MWQ12-2	12	2	0.998	1.375
MWQ19-05	19	0.5	1.373	0.875
MWQ19-1	19	1	1.373	1.250
MWQ19-2	19	2	1.373	2000
MWQ25-05	25	0.5	1.873	0.875
MWQ25-1	25	1	1.873	1500
MWQ25-2	25	2	1.873	2500
MWQ32-05	32	0.5	2.248	1000
MWQ32-1	32	1	2.248	1750
MWQ32-2	32	2	2.248	3000